

iCarsoft® i800 Software Upgrade User Guide

This function allows user to update the scan tool software through a computer when customer needed.

- *You need prepare the following items to update your scan tool.*
 - Update Application programs (you install it according to the appendix-A)*
 - USB Driver software (Certainly, other than special Circumstances, how to manually install the USB Driver according to the appendix-B)*
 - iCarsoft OBDII/EOBD&CAN Auto Diagnostic Tool i800*
 - A PC or laptop with USB Ports*
 - A Data cable matched with Scan Tool*

1) Install the programs of Update Application into your computer.

2) Click the programs of Update Application in your computer and select product model. (Figure1)

3) Make sure the scan tool display **UPGRADE MODE** when you connect the scan tool to your computer with the Data cable provided, at the same time you should not touch the keys of scan tool or pull the Data cable out.

4) The Update Application will display the update interface When you select the icon of Update.

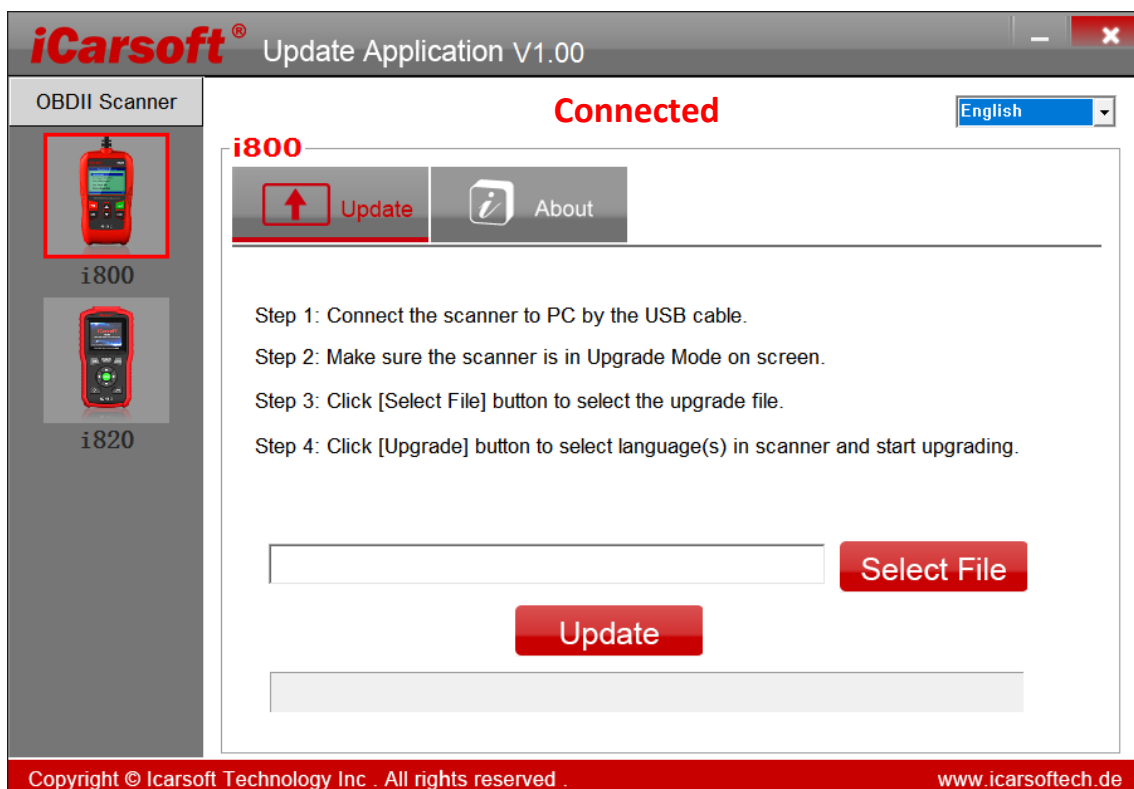


Figure1

5) Click **Select File** button to select the program file and open it as below.

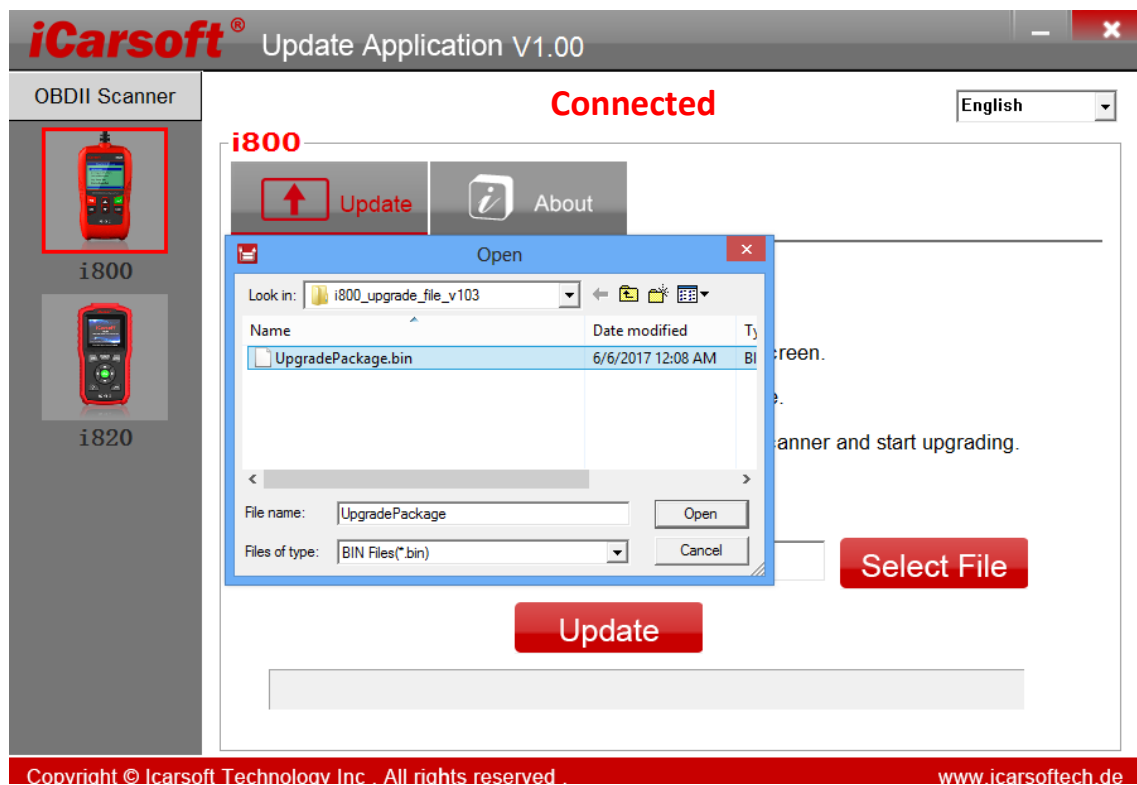


Figure2

6) Click **Update** button to select the languages you wanted and start to update the scan tool.

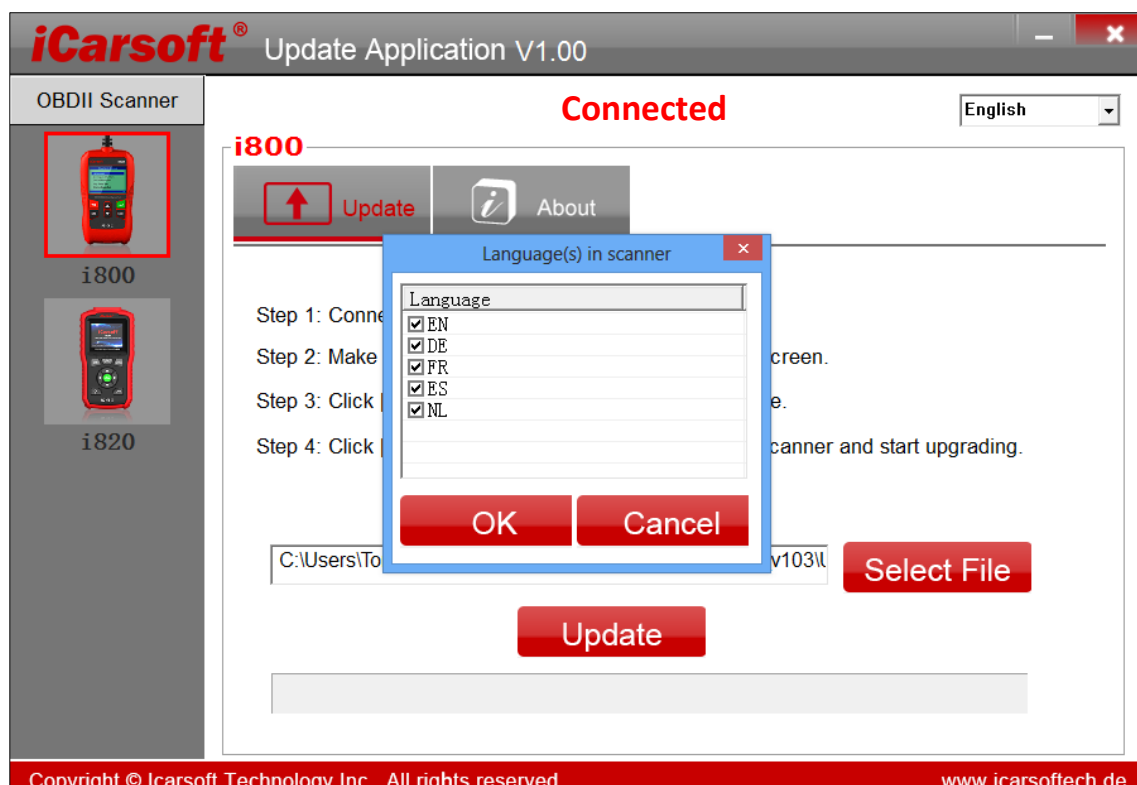


Figure3

7) The scan tool screen and Update Application will display the blue progress bar.

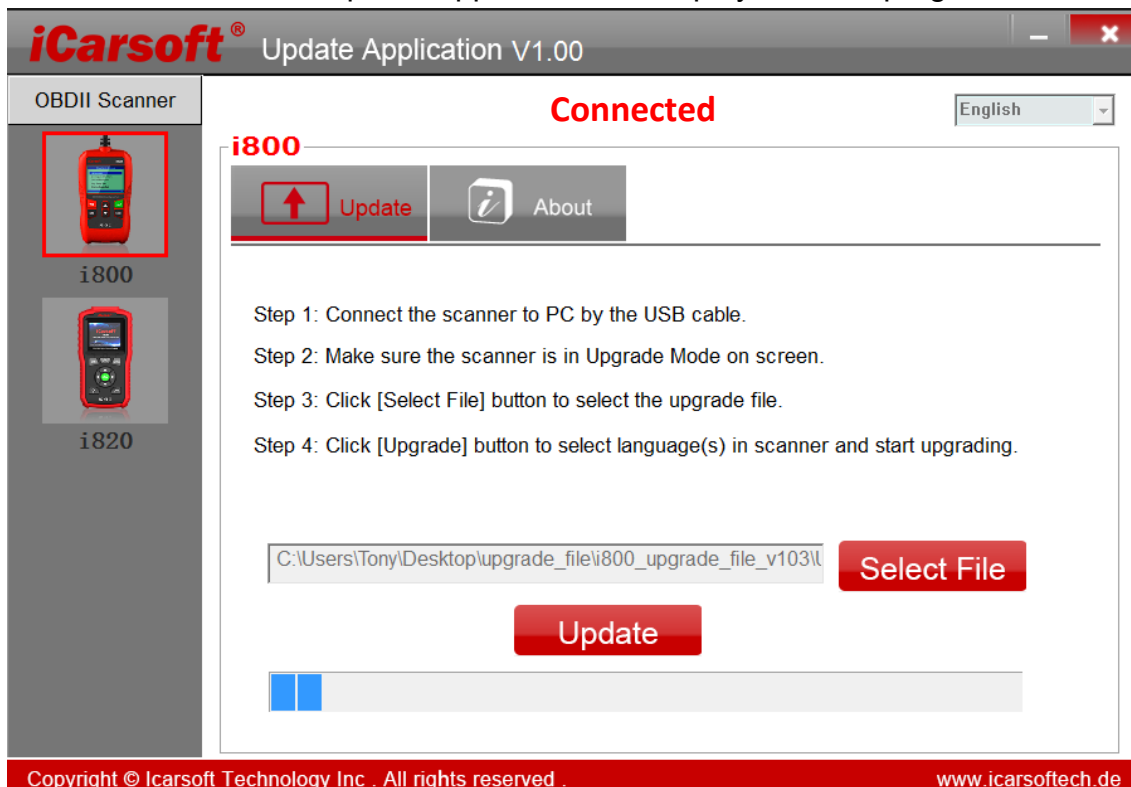


Figure4

8) The scan tool will restart when the information remind Upgrade is ok, it means upgrade is finished successfully.

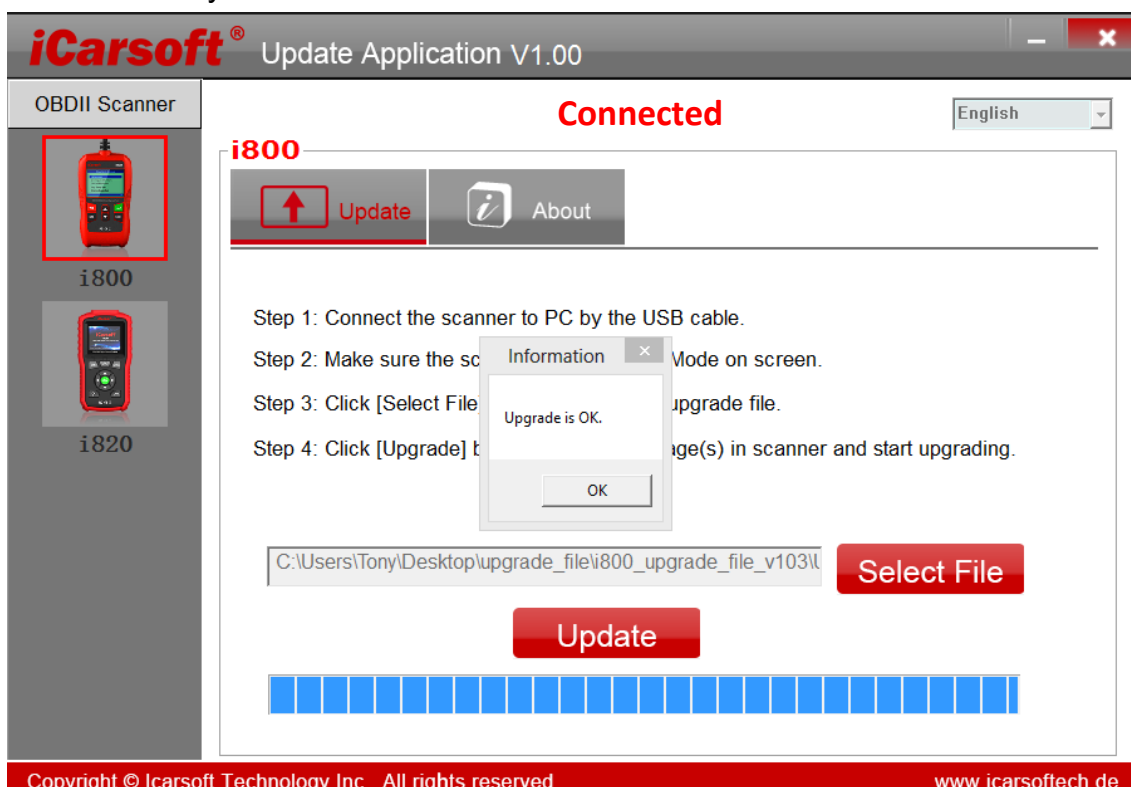


Figure5

Appendix-A: *How to install the Update Application of scan tool*

You should install the update application in order to update the newer software of scan tool when customer needed.

1) Copy or download the iCarsoft_PCClientKits_Setup file to your computer with USB Port.

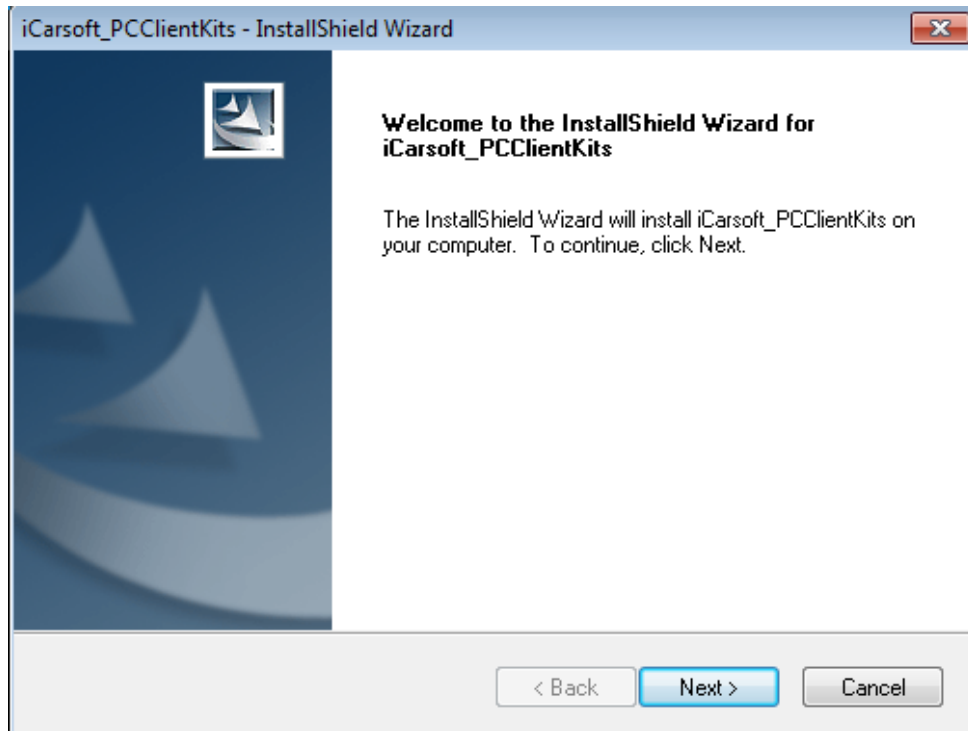


Figure A-1

2) You can see the interface of Modify, repair or remove the program, select one model your wanted to continue.

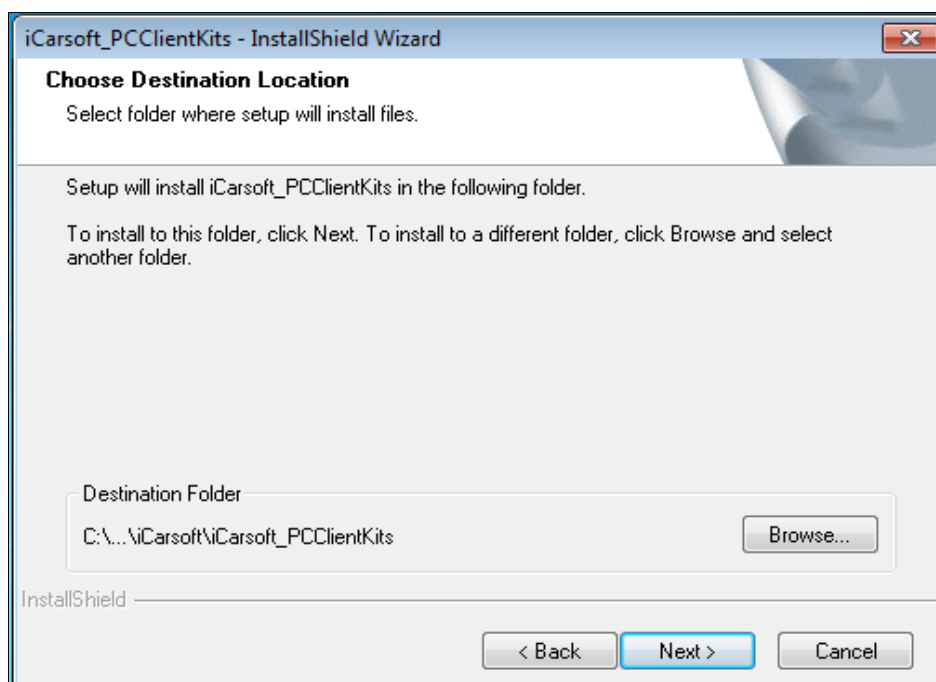


Figure A-2

3) Click the **Next** button to continue the next operation.

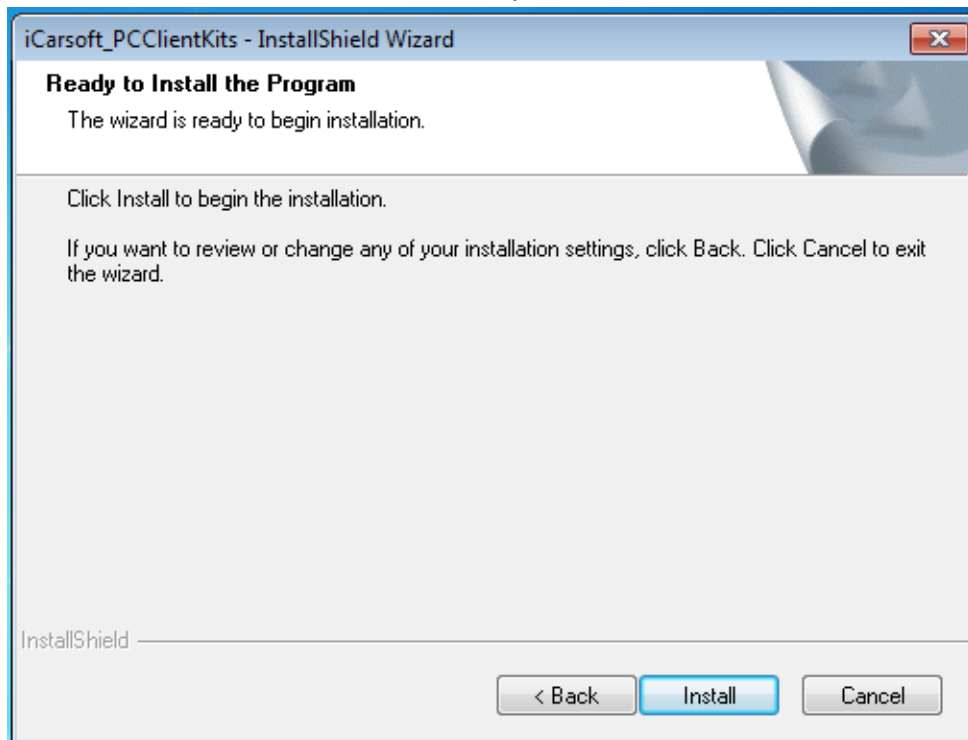


Figure A-3

4) Please waiting for a few moment when the setup status has been displayed.

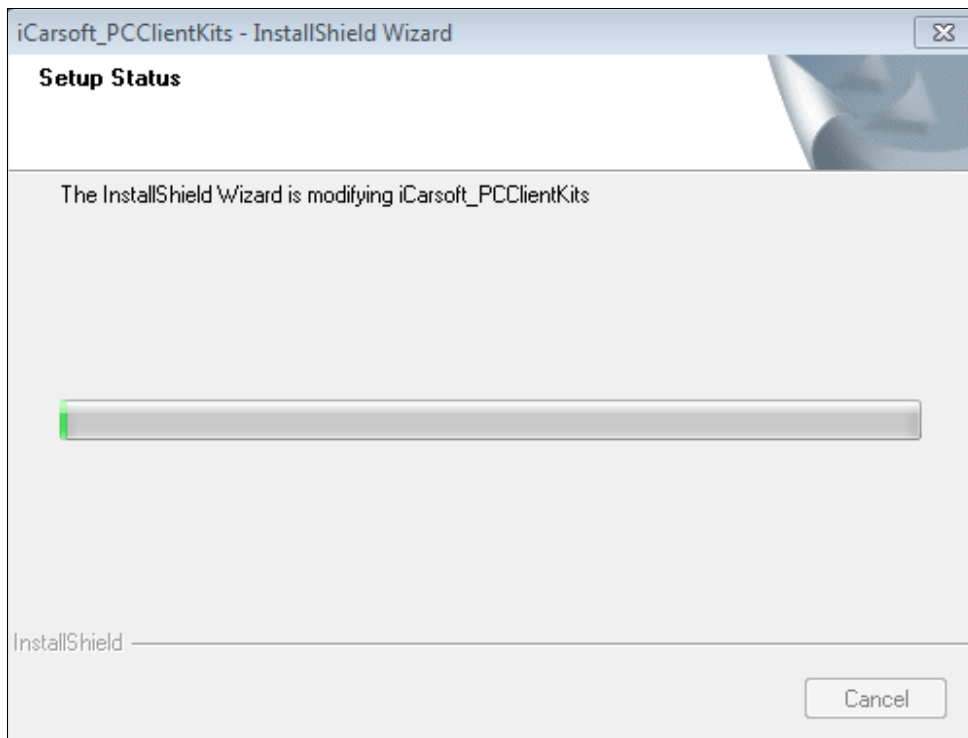


Figure A-4

5) Please click the Install this driver software anyway to continue when the win7 system displayed as below.

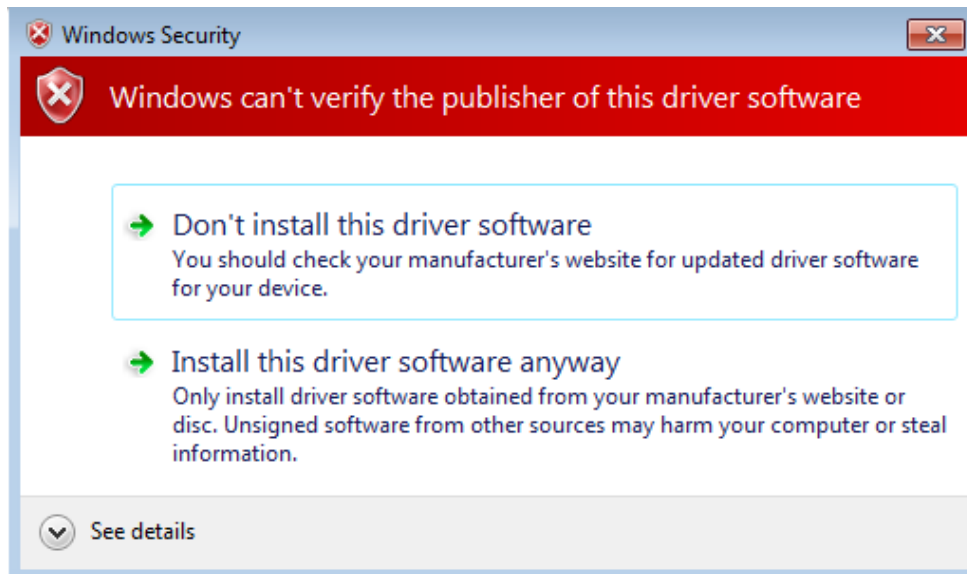


Figure A-5

6) Click the **Finish** button to finish the whole operation, and double click the desktop shortcut of Update Application to update the newer software of scan tool.

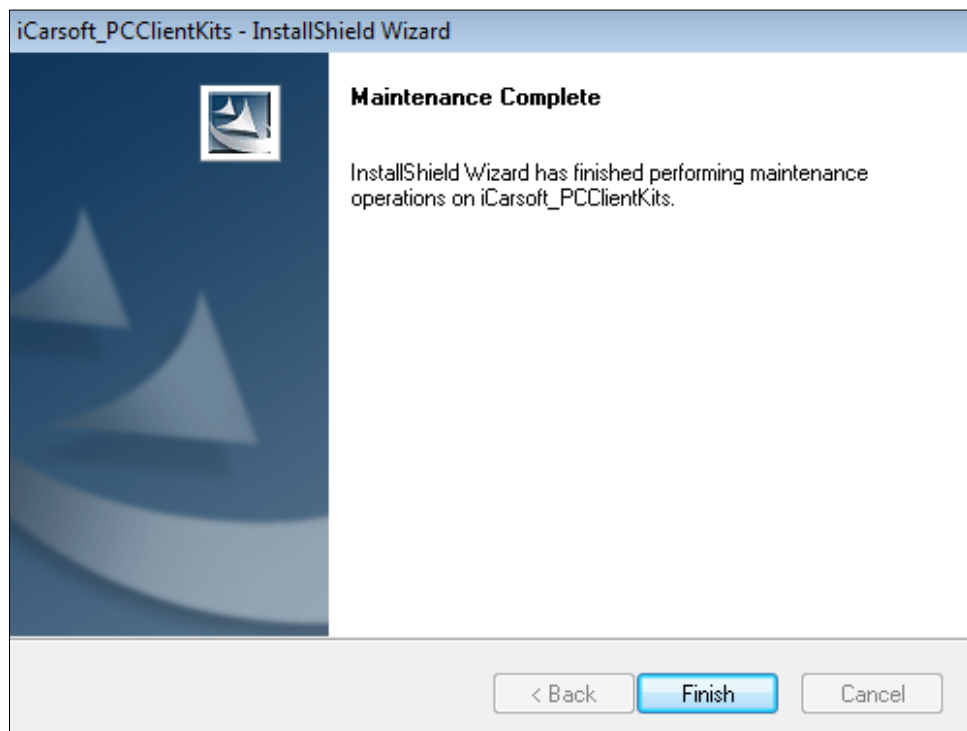


Figure A-6

Appendix-B: How to manually install the USB Driver of scan tool

This function allows user to install the USB Driver through a computer cannot identify your scan tool, you need to connect the scan tool with PC and Manual install it.

1) Connect the scan tool to your computer when it cannot identify.

2) Look for “search programs and files” function and input “device manager” when your computer was Win7 or Win10 operation system, or open the “Computer” and select the “Manager” when your computer was Win8 operation system.

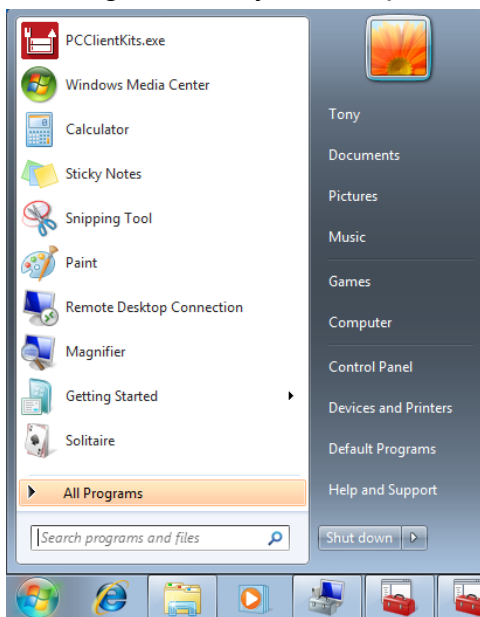


Figure B-2-1

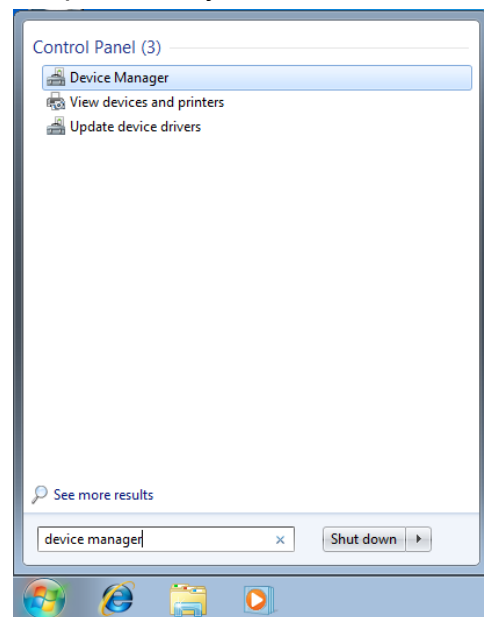


Figure B-2-2

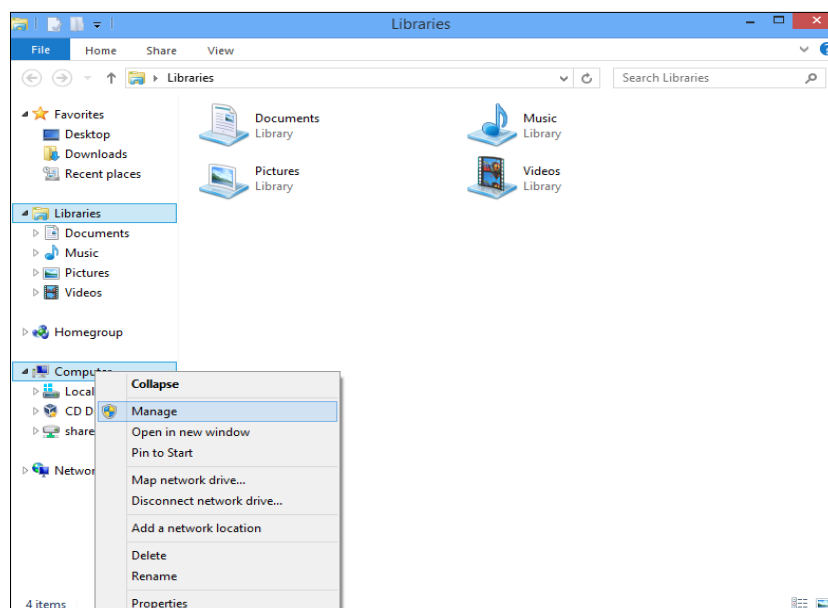


Figure B-2-3

3) Click the COM Port without USB driver in Computer Management list.

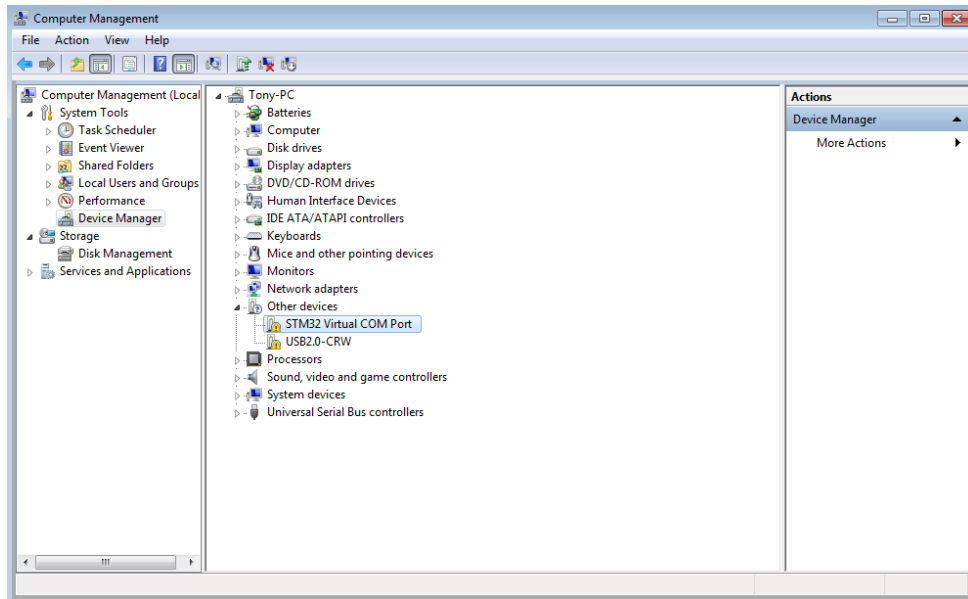


Figure B-3

4) Move the mouse pointer to the menu bar of Update Driver Software.

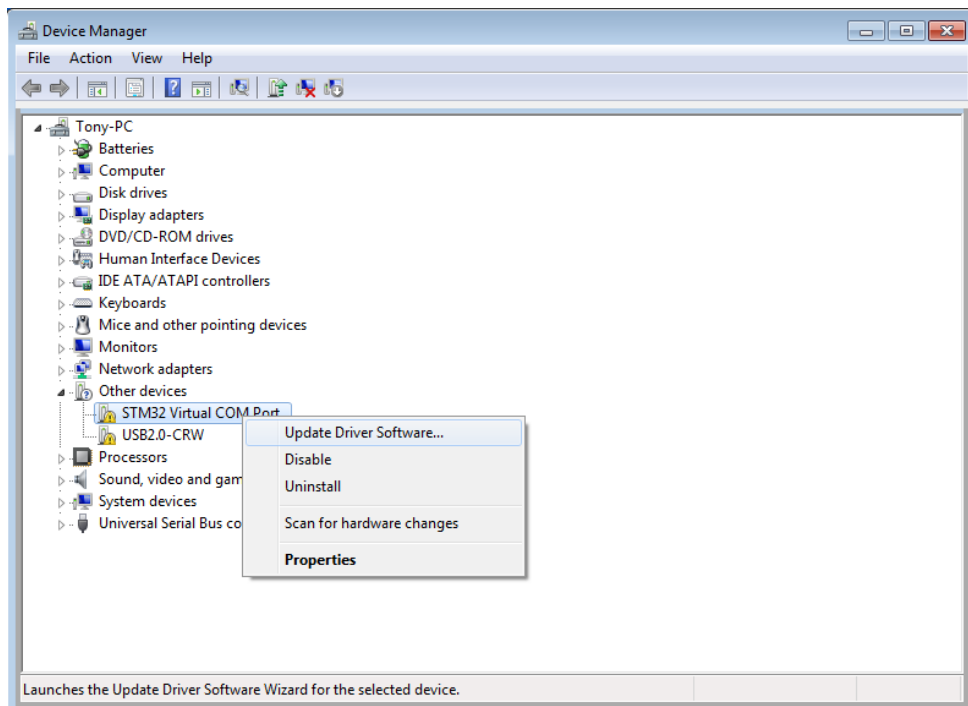


Figure B-4

5) Select "Browse my computer for driver software" and click it to continue.

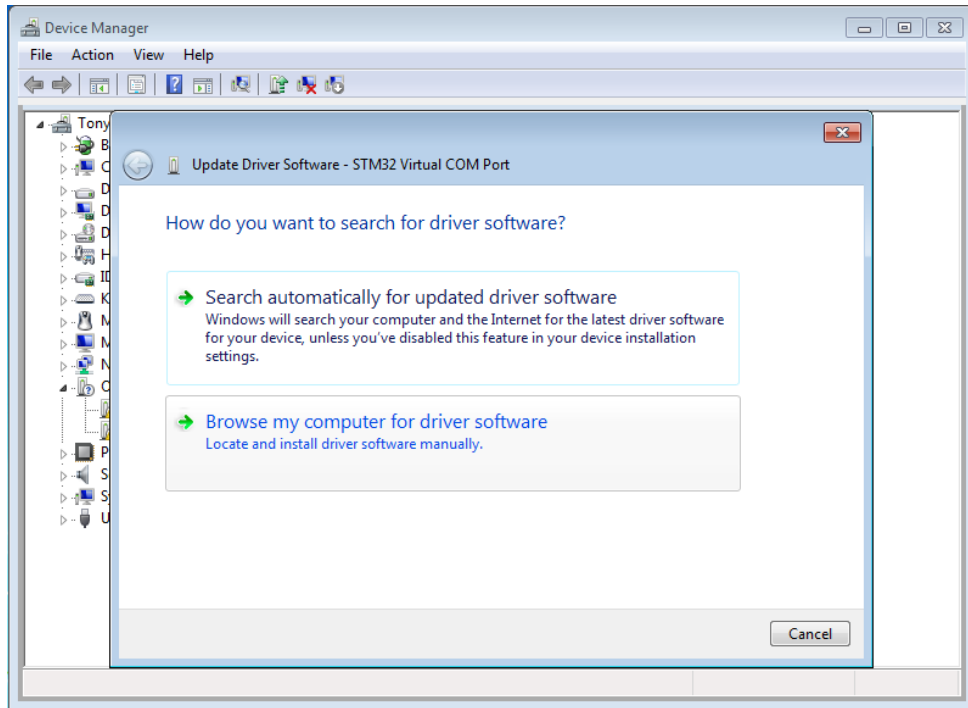


Figure B-5

6) Browse the folder route of USB Driver:

C:\Program Files (x86)\iCarsoft\iCarsoft_PCClientKits\VCP_Driver, click Next to continue the next step.

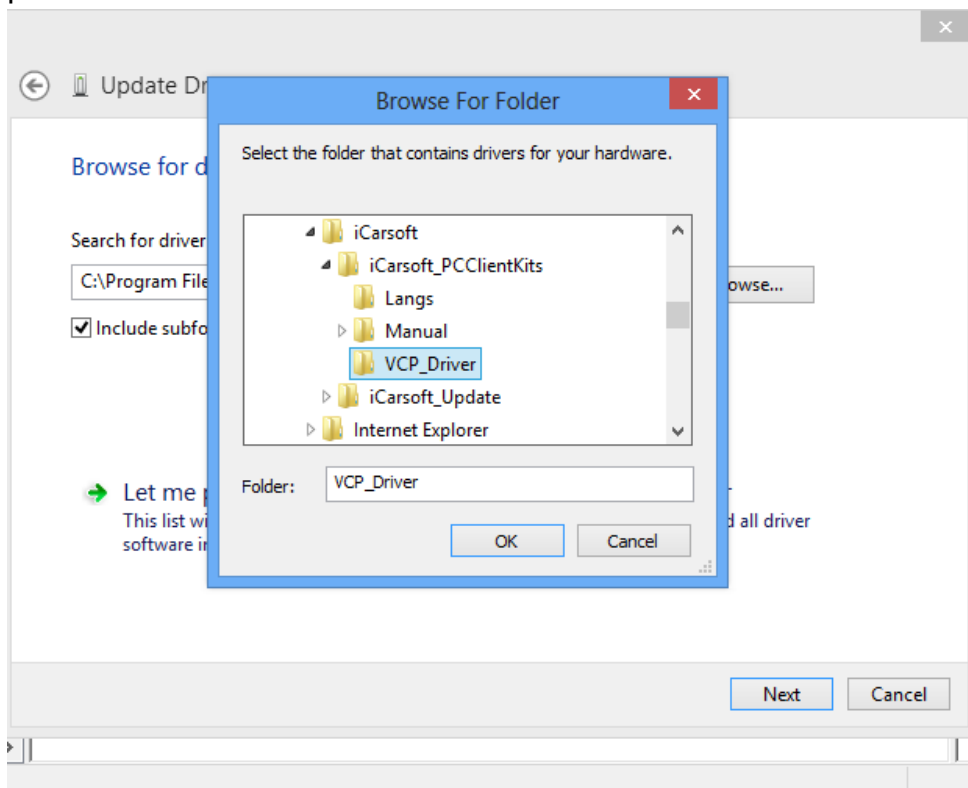


Figure B-6

7) When you select the route of USB Driver right, click the **Next** button to continue and wait for a while for this action.

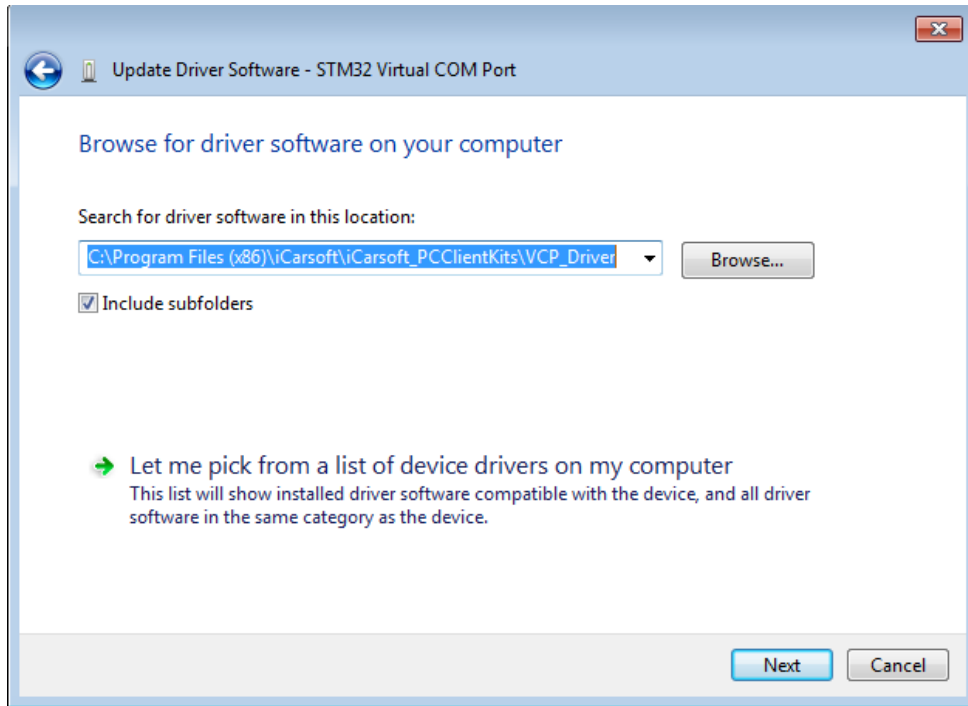


Figure B-7-1

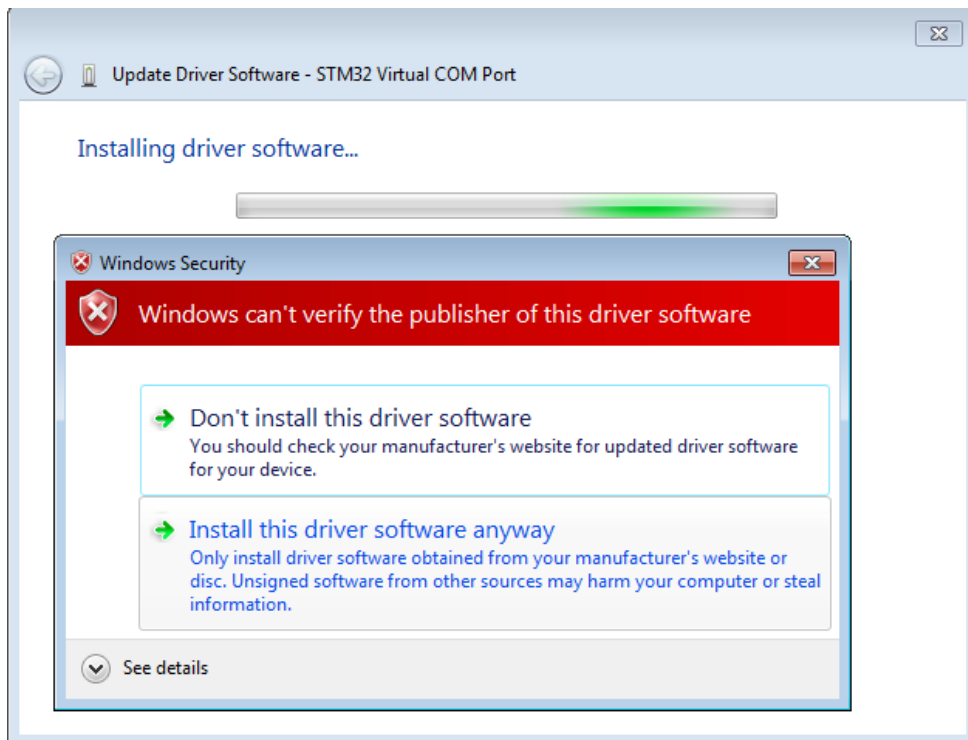


Figure B-7-2

8) And then computer will show that windows has successfully updated your driver software, if you see the status of device as Figure A-8-2, it means you can use the USB port normally.

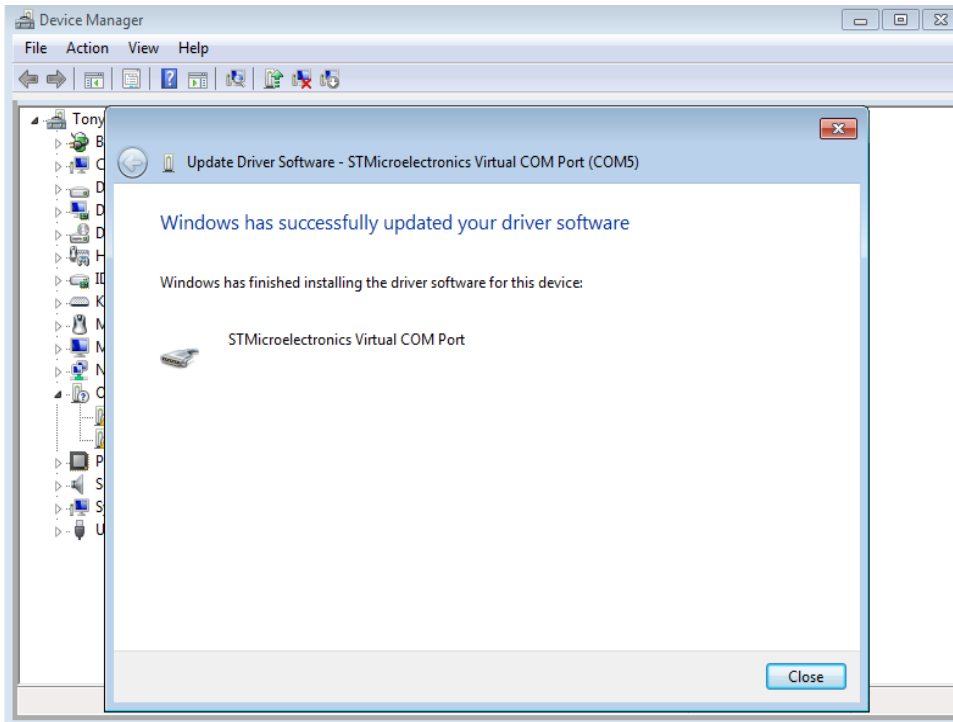


Figure B-8-1

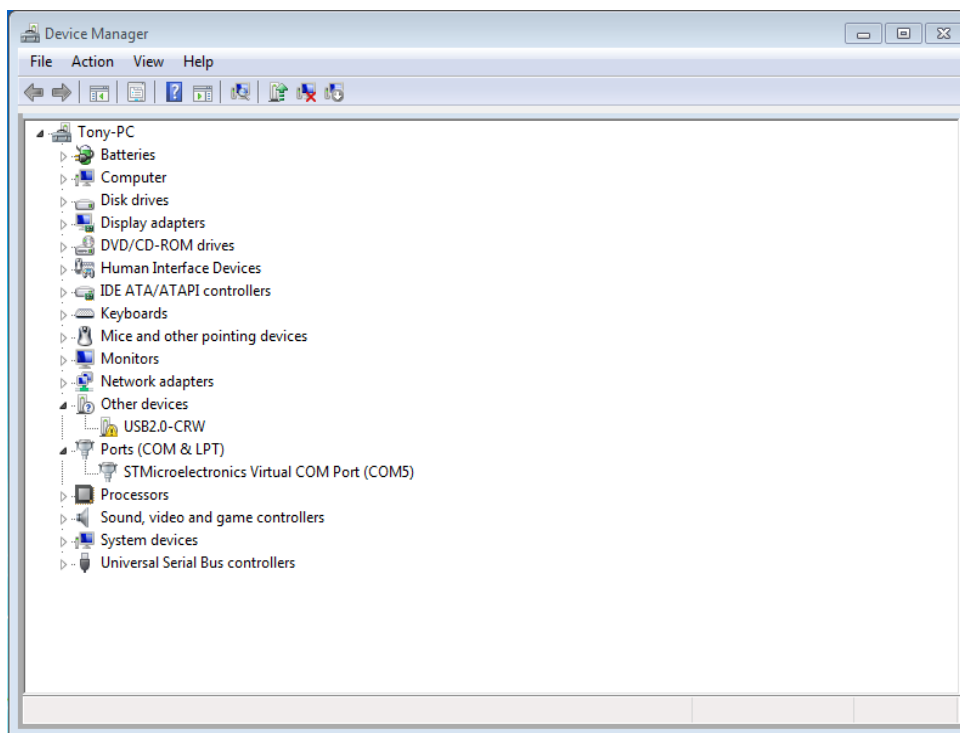


Figure B-8-2